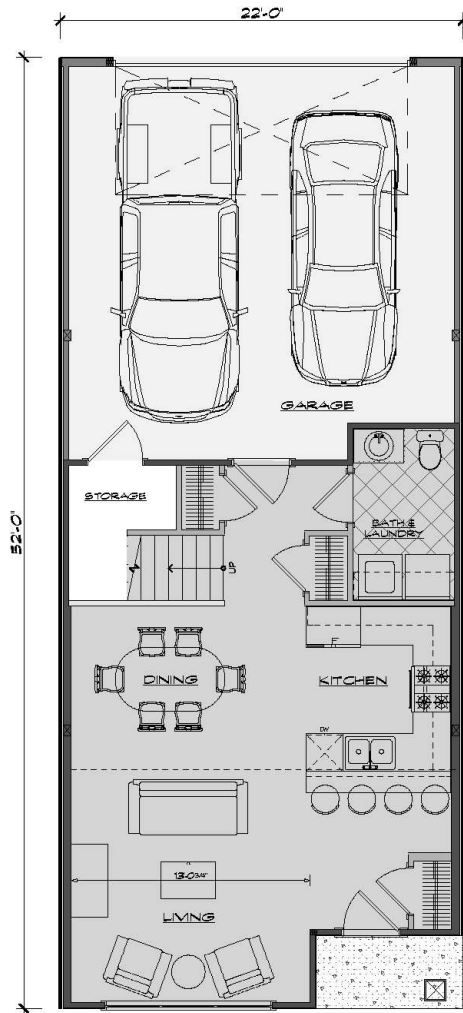
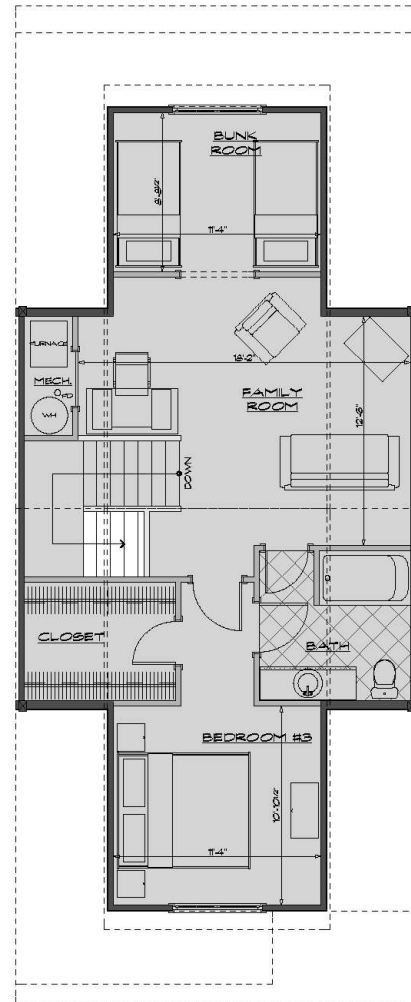


# HAWTHORNE TOWNHOME CONDOMINIUMS



**MARSH WALK 594 sq ft**  
ML @ 594 + UL @ 730 = 1,324 sf  
1 BEDROOM, 1 BUNK ROOM, 1 1/2 BATHS

**MAIN LEVEL  
FLOOR PLAN**



**MARSH WALK 730 sq ft**  
ML @ 594 + UL @ 730 = 1,324 sf  
1 BEDROOM, 1 BUNK ROOM, 1 1/2 BATHS

**UPPER LEVEL  
FLOOR PLAN**



The builder reserves the right to change any information herein without notice. All floor plans are approximate and may change. Renderings are an artist conception and may vary in construction.



**Hathaway Properties**

# HAWTHORNE TOWNHOME CONDOMINIUMS

1900 - 1910 Meijer Drive (Six Units) Greenville, MI 48838

## Interior Features\*

- Six varying open floor plans
- 9' main floor ceilings
- Creative use of upper floors
- Thoughtful kitchen design
- Kitchen appliance allowance
- High quality cabinetry
- Exhaust fans for each bathroom
- Ice maker line for refrigerator
- Kitchen garbage disposal
- Master bedroom/bath/walk-in closet
- Master bedroom ceiling fan
- Vanity mirrors for each bathroom
- Cultured marble vanity tops and sinks
- Wire closet shelving
- First floor laundry
- Central air-conditioning
- Four phone jacks
- Four cable jacks
- Door chime
- Smoke detectors
- Recessed lighting
- Four panel interior doors
- Forty gallon hot water heater
- 80% gas efficient furnace
- 100 amp electrical service

## Exterior Features

- Designed by Visbeen Associates, Inc.
- Six varying exterior designs
- Private front entrances with sidewalks
- Mailbox
- Attached two-stall garage with opener
- Steel roll-up garage door with rubber sweep
- Garage fully dry walled
- Ground fault duplex outlet in garage
- Waterproof electric outlet - front and rear
- Paved rear-access driveway
- Vinyl siding
- Stone chimneys (3 units)
- Andersen windows and screens
- Patio door with screen (2 units)
- Poured cement patio (2 units)
- Lush landscape with irrigation
- Decorative exterior light fixtures

\*Customized professional interior design packages for lighting, carpet, flooring, paint color, and cabinets.

The builder reserves the right to change any information herein without notice. All floor plans are approximate and may change. Renderings are an artist conception and may vary in construction.



**Hathaway Properties**