

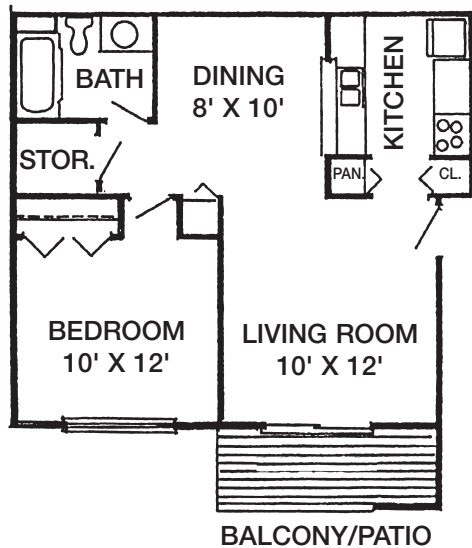


maplewood square

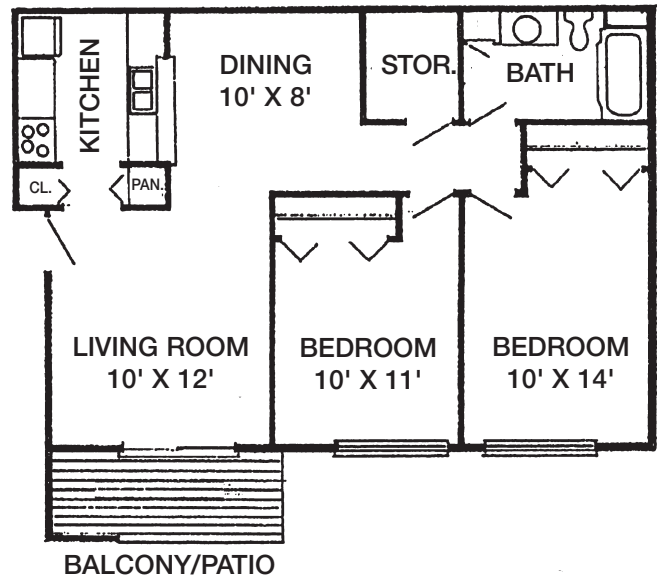
Apartments



1 BR/1 Bath - 630 Sq. Ft.



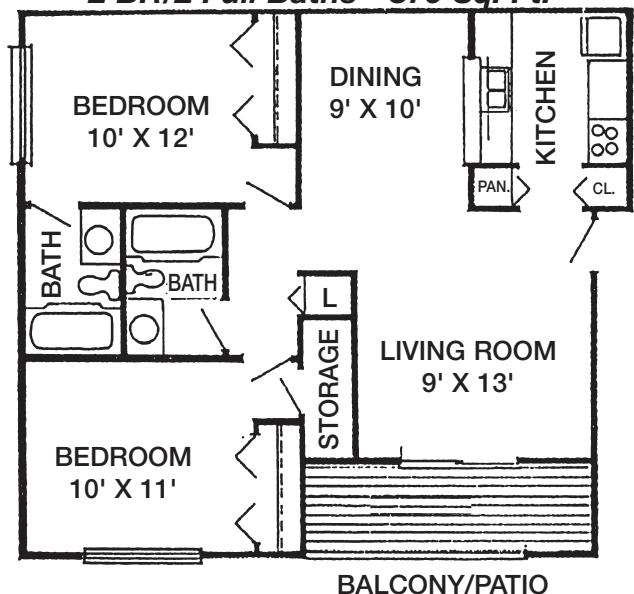
2 BR/1 Bath - 760 Sq. Ft.



One Bedroom / Two Bedroom Units Feature:

- Location! Greenville's growing west side
- Greenville Public Schools (situated beside Greenville High School)
- Pretty, landscaped grounds
- Playgrounds
- Entry intercom security system
- Hardwood cabinetry
- Full-size refrigerator
- Electric range/oven
- Dishwasher
- Food disposal
- Laundry facilities in each building
- Window treatments/plush carpeting
- Living room patio/balcony
- Ample storage
- Well lit parking/carports available
- Barrier free apartments available
- Monthly rental includes heat, water, snow removal, trash removal & lawncare

2 BR/2 Full Baths - 870 Sq. Ft.



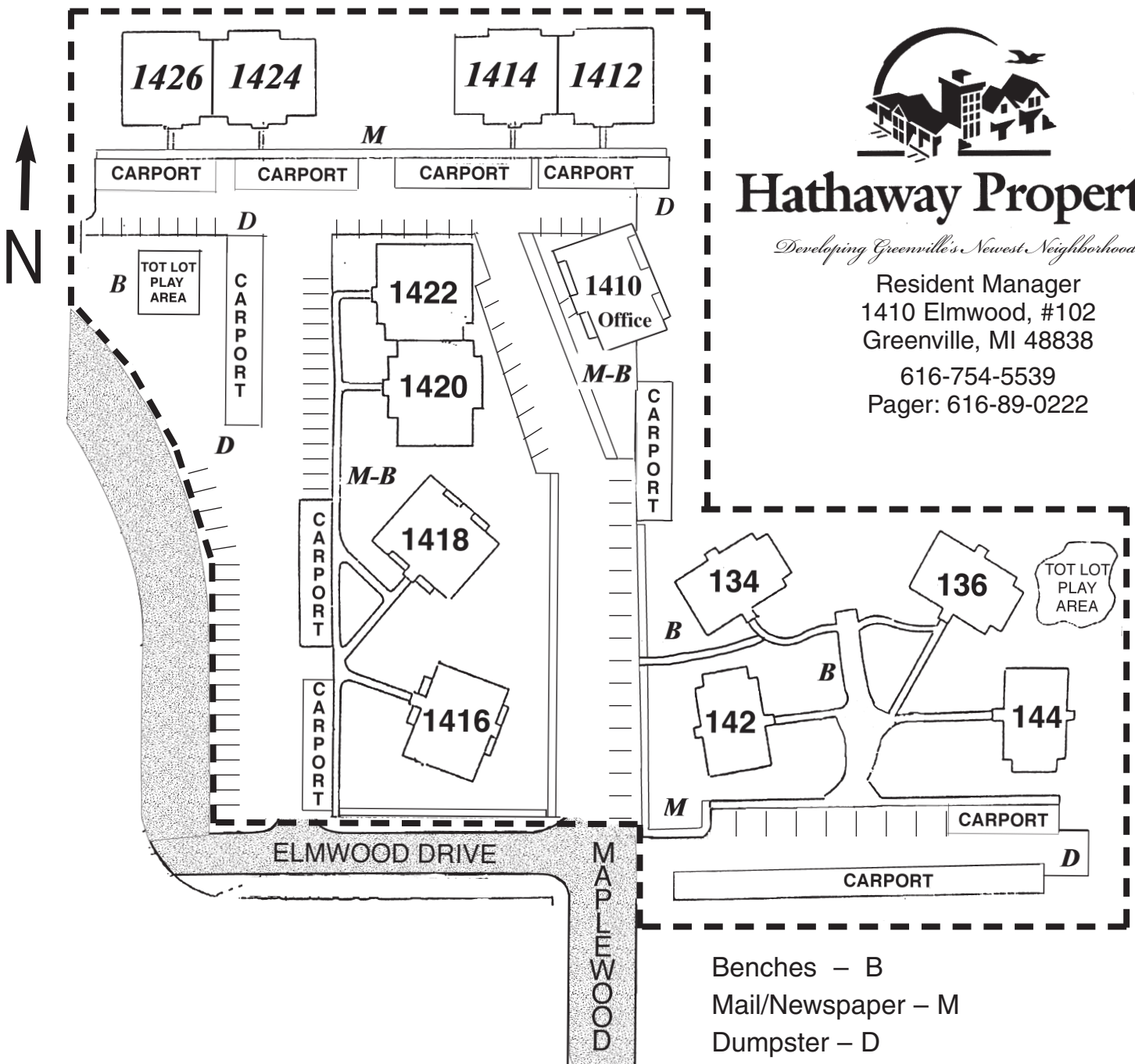
maplewood square

Apartments



Be a part of convenient living in Greenville's growing west side. This unique residential apartment complex, beautifully designed and landscaped, consists of spacious one and two bedroom homes. Maplewood Square Apartments are located just west of downtown Greenville off M-57, across the street from Meijer and adjacent to the Greenville West Shopping Center.

Site Plan



Hathaway Properties

Developing Greenville's Newest Neighborhoods

Resident Manager
 1410 Elmwood, #102
 Greenville, MI 48838
 616-754-5539
 Pager: 616-89-0222

Benches – B
 Mail/Newsroom – M
 Dumpster – D