



Meadow Ridge Apartments & Townhomes

Features

- New construction, 2005
- Beautiful, quiet, natural setting with pond views
- Location! Greenville's growing "walkable" west side or City bus
- Greenville Public Schools
- On-site Security Manager
- Contemporary, spacious floor plans with ample natural light
- Private, front entrance
- Private, detached garage w/remote control (Apartments)
- Private, attached garage w/remote control (Townhomes)
- Hardwood cabinetry
- Frost free refrigerator/above range microwave
- Electric range/oven
- Dishwasher/food disposal
- Breakfast bar
- Laundry closet w/full-size electric washing machine and dryer
- Window treatments/plush carpeting
- Living room patio/deck
- Cable access in three locations
- Energy efficient gas heat and central air-conditioning
- Barrier free apartment available
- FREE WATER
- PET FRIENDLY



Hathaway Properties

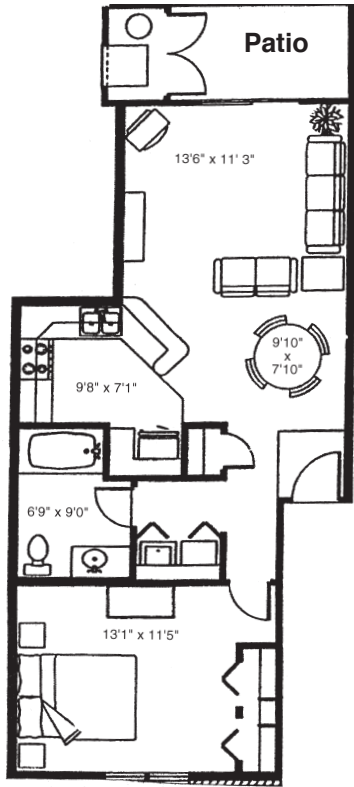
Developing Greenville's Newest Neighborhoods

820 S. Greenville West Drive, Greenville MI 48838
(616) 754-6130
www.hathawayproperties.com

Apartments

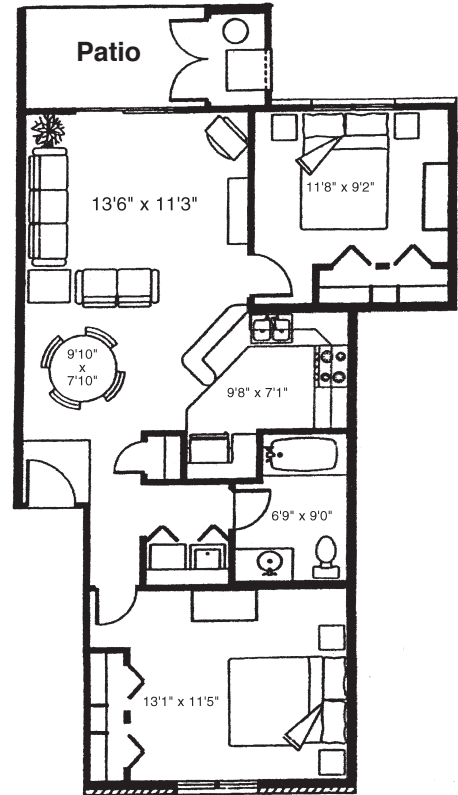
ONE BEDROOM, ONE BATH

880 Square Feet



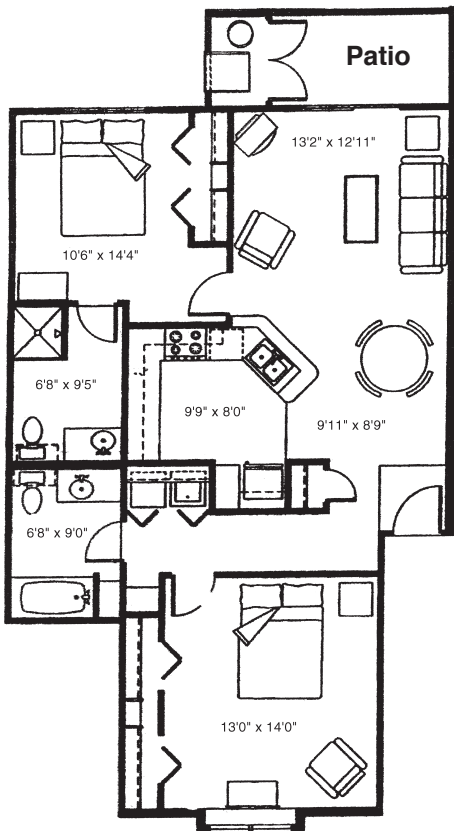
TWO BEDROOM, ONE BATH

950 Square Feet



TWO BEDROOM, TWO BATH

1100 Square Feet



THREE BEDROOM, TWO BATH

1180 Square Feet

